

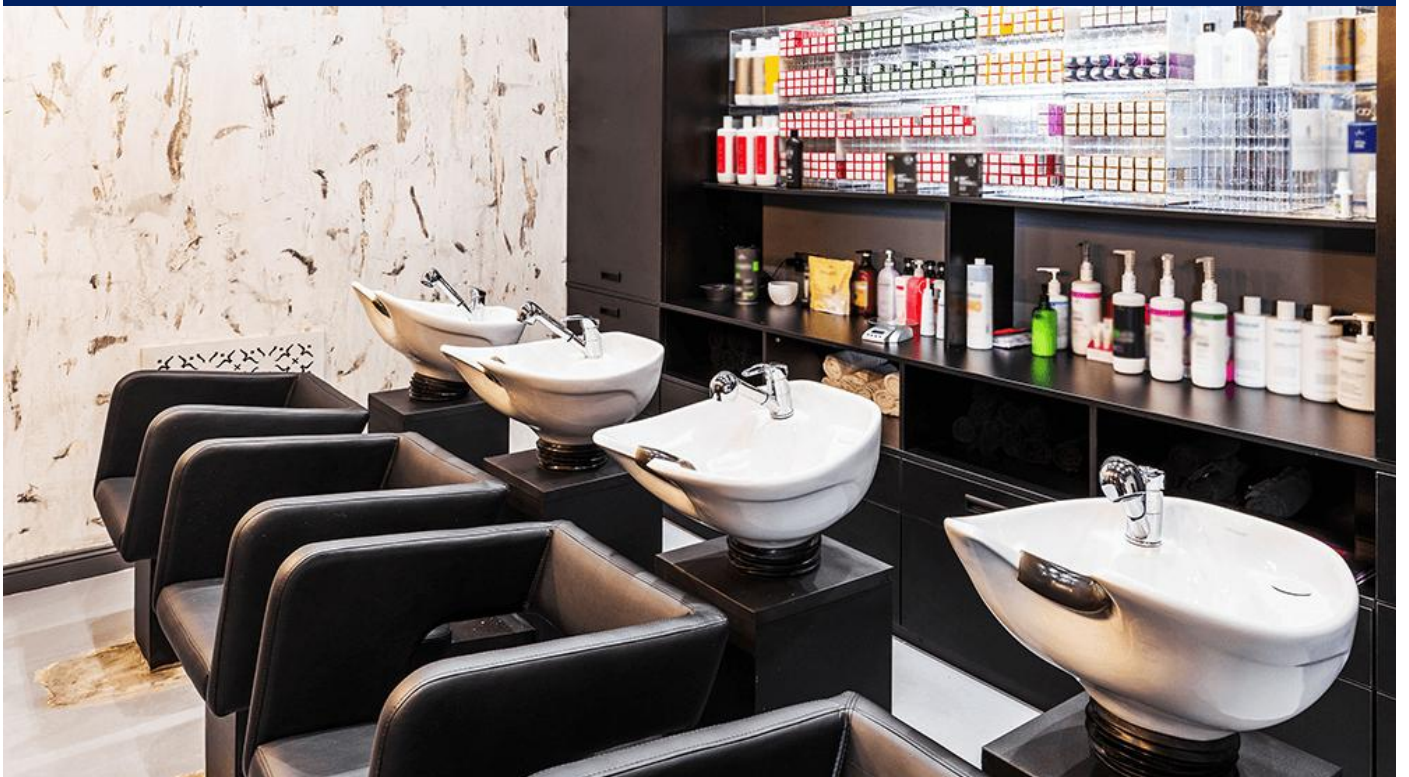


Government of Maharashtra

**Directorate of Vocational Education and Training**  
**Craftsman Training Scheme**

**SPECIFICATION FOR COSMETOLOGY EQUIPMENTS**

Version 4, 2024





## TABLE OF CONTENTS

1	Barber Scissor - 5 Inch, Set of 4 .....	5
2	Beauty Equipment Studio.....	6
3	Beauty Equipment Trolleys .....	8
4	Ceramic Straightening Iron.....	9
5	Crimper.....	10
6	Curling Rod with Attachment.....	11
7	Dry Sterilizer - Ultra Violet.....	12
8	EMS Machine.....	13
9	Facial Bed .....	14
10	Hair Dryer - 2000 W.....	15
11	High Frequency Machine.....	16
12	Hood Dryer with stand .....	17
13	Hot Rollers - Set of 20.....	18
14	Hot Towel Cabinet - Single Door .....	19
15	Infrared Lamp .....	20
16	Manicure Bowls .....	21
17	Manicure Stool .....	22
18	Manicure Table.....	23
19	Manicure Trolley .....	24
20	Neck Tray for Perming.....	25
21	Pedi Spa Tub .....	26
22	Pedicure Stool .....	27
23	Shampoo Station with Chair.....	28
24	Multipurpose Styling Chair .....	29
25	Thinning Scissors .....	30
26	Vapozone.....	31
27	Wax Heater - Single Pot.....	32
28	Wet Sterilizer .....	33
29	Yoga Mat .....	34



**1 Barber Scissor - 5 Inch, Set of 4**

1.1 Basic indicative diagram



- 1.2 Should be supplied in set of four
- 1.3 Size: 5.5 inch
- 1.4 Should have off set hand holding design
- 1.5 Finish: Mirror finish
- 1.6 Should be useful in hair cut

## 2 Beauty Equipment Studio

### 2.1 Basic Indicative Diagram



2.2 Dimensions: Height 36 Inches, length 24 Inches, width 12 Inches

2.3 Voltage: 220 Volts, 50 Hz

2.4 The machine should have following 8 uses

2.4.1 High frequency

2.4.2 Vacuum

2.4.3 Spray

2.4.4 Peeling

2.4.5 Galvanic

2.4.6 Woods Lamp

2.4.7 Vaporizer

2.4.8 Towel Warmer with Hot Cabinet

2.5 High frequency

2.5.1 Should be able to stimulate circulation of blood

2.5.2 Should aid in deeper penetration of product in to the skin

2.5.3 Should aid in elimination and absorption

2.5.4 Stimulates circulation of blood

2.5.5 Acts deeper penetration of products in to skin

2.6 Vacuum

2.6.1 Suction should help deep pour cleansing

2.6.2 Should also give deep penetrating massage and draws blood to surface skin

2.7 Spray

2.7.1 Should help in thorough cleansing of skin's surface

2.7.2 Spay should be used to flush out the pours

2.8 Peeling

- 2.8.1 Should be able to slough off the dead cells and to remove any dirt that sticks to the surface of the skin
- 2.9 Galvanic
  - 2.9.1 Should introduce water soluble products in to skin
  - 2.9.2 Should close to pores after facial treatment
  - 2.9.3 Should prevent inflammation after blemish treatment
  - 2.9.4 Should force acid PH solutions such as astringent in to skin
  - 2.9.5 Should stimulate the circulation of blood to dry skin
- 2.10 Woods Lamp
  - 2.10.1 Should help to analyze skin condition
  - 2.10.2 Violet rays enables to analyze surface and deeper layer of skin in order to determine proper treatment of various skin conditions
- 2.11 Vaporizer
  - 2.11.1 Vapors must soften the dead surface cells
  - 2.11.2 Warm humid mist will aid in opening the follicles so that they can be properly cleansed
- 2.12 Towel Warmer with Hot Cabinet
  - 2.12.1 Constant temperature control to 60 degrees centigrade
  - 2.12.2 Capacity to store 12 towels
- 2.13 Should have arrangement for Two Bowls for product/ accessories
- 2.14 Two Bowls should be provided with machine

### 3 Beauty Equipment Trolleys

#### 3.1 Basic indicative diagram



#### 3.2 Dimensions:

3.2.1	Variation:	± 5%
3.2.2	Height:	90 cm
3.2.3	Width:	33 cm
3.2.4	Depth:	35 cm

3.3 Number of trays: 5

#### 3.4 Material:

3.4.1	Tray:	Plastics
3.4.2	Frame Side Panels:	MS/ Aluminium Tube and Sheet

3.5 Color: Black

3.6 Should be suitable for hair dressing

3.7 Top Tray having provision for holding accessories

3.8 Provision to keep bowl on both side

3.9 Ring should be attached for keeping Hair dryer

3.10 Caster wheel should be attached



## 4 Ceramic Straightening Iron

### 4.1 Basic indicative diagram



- 4.2 Size of Rod: 35 to 40 mm
- 4.3 Variable temperature: 130 - 230 Degree Centigrade
- 4.4 Power: 50 W, 230 Volts
- 4.5 Material: Titanium
- 4.6 Finish: This Iron Body should have Black Matte Finish
- 4.7 Should display Digital Temperature
- 4.8 Should be suitable for Hair Straightening and smoothening
- 4.9 Should have Infrared Light for Dandruff treatment

## 5 Crimper

### 5.1 Basic indicative diagram



- 5.2 Voltage: 240 Volt
- 5.3 Power: 65 watts
- 5.4 Working temperature: Digital Temperature Operating System: 130 to 230 Degree Centigrade
- 5.5 Should be suitable for Hair Crimping
- 5.6 Finish: Black Matt finish
- 5.7 Material: Titanium

## 6 Curling Rod with Attachment

### 6.1 Basic indicative diagram



- 6.2 Voltage: AC 220V, 50/60Hz
- 6.3 Should be able to eliminates dull, frizzy & dehydrated hair
- 6.4 Should be useful for curling hair
- 6.5 Prevents Split Ends
- 6.6 Makes hair silky shine and healthy
- 6.7 Locks color & hairs natural moisture
- 6.8 Side vents to allow water to evaporate as steam technical data
- 6.9 Rated Capacity: 30-60W
- 6.10 Cord: 2.5 Meter
- 6.11 CE Certificate
- 6.12 360 Degree Swivel Cord

## 7 Dry Sterilizer - Ultra Violet

### 7.1 Basic indicative diagram



- 7.2 Should be useful for killing bacteria & germs for scissor, comb, brushes
- 7.3 Voltage: 110-240 V
- 7.4 Box: Rectangular ABS 8W UV sterilizer
- 7.5 Should work as sterilization cleaning tool
- 7.6 Frequency: 50 Hz / 60 Hz
- 7.7 Power: 8 W
- 7.8 Space capacity: 5 Liter
- 7.9 Material: ABS environmental protection material
- 7.10 Disinfection: UV + Ozone
- 7.11 Disinfection Time: 30 minutes
- 7.12 Should be useful for: Wig, Beauty Nail Tools, Tooth Brushes, Clothing, Combs, Glasses, etc.

## 8 EMS Machine

### 8.1 Basic indicative diagram



### 8.2 Should have

- 8.2.1 8 Channels, 16 pads output
- 8.2.2 Digital treatment timer
- 8.2.3 Three modes (Inch Loss, Fat Loss & Toning / Firming)
- 8.2.4 Each channel has independent power controls

### 8.3 Should be useful for

- 8.3.1 Figure toning for women
- 8.3.2 Body firming for men
- 8.3.3 Post-natal improvement
- 8.3.4 Enhance local break down of fats

## 9 Facial Bed

### 9.1 Basic indicative diagram



### 9.2 Size:

9.2.1 Length: 6 Feet

9.2.2 Width: 2 Feet

9.2.3 Height: 30 Inch

9.3 Material (Frame & Storage): M.S. Pipe & Sheet

9.4 Material (Bed): Soft Cushion Foam & Foam Leather

9.5 Bed should be provided with Metal Storage

**10 Hair Dryer - 2000 W**

10.1 Basic indicative diagram



- 10.2 Rating: 220V -240V, 50/ 60 Hz, 2200 W - 2500 W
- 10.3 Cool shot button
- 10.4 2 Speed Combination
- 10.5 2 Air Flow Nozzles
- 10.6 Power rating: 2500 Watt
- 10.7 Cord Length: 2.5 Meters

## 11 High Frequency Machine

### 11.1 Basic indicative diagram



11.2 Voltage: 220 V

11.3 Power: 11 wats

11.4 Should be useful for

11.4.1 Accelerate Blood Circulation

11.4.2 Strengthen Lymph Activity

11.4.3 Kill Bacteria & Virus

11.4.4 Stimulate Circulation

11.4.5 Eliminate Acne & Pimples

11.4.6 Should be useful for disinfection, promoting acne recovery, reducing wrinkle metabolism and blood circulation of your skin and your head

11.5 Should have provision four different attachments

11.5.1 Large mushroom for large facial areas

11.5.2 Small mushroom for smaller area

11.5.3 Small glass head for spot areas

11.5.4 Comb accelerate the blood circulation of the head



## 12 Hood Dryer with stand

### 12.1 Basic indicative diagram



- 12.2 Hood should be made of fiber glass
- 12.3 Diameter: 12 to 14 Inch
- 12.4 Should hold the transparent visor, folding all along the diameter with half the visor fix while half folding
- 12.5 The hood should contain heavy duty motor
- 12.6 The unit should be control by timer that shuts the unit off immediately after the desired time
- 12.7 Hood should be fixed on the stand
- 12.8 Cool warm and hot head selector switch should be provided

### 13 Hot Rollers - Set of 20

#### 13.1 Basic indicative diagram



- 13.2 Frequency: 50 Hz
- 13.3 Max Temperature: 160 Degree Celsius
- 13.4 Min Temperature: 140 Degree Celsius
- 13.5 Power: 40 W
- 13.6 Voltage: 220 - 240 V
- 13.7 Should be useful for Curling Hair
- 13.8 Rollers:
  - 13.8.1 Small: 6 Nos.
  - 13.8.2 Medium: 6 Nos.
  - 13.8.3 Big: 8 Nos.

## 14 Hot Towel Cabinet - Single Door

### 14.1 Basic indicative diagram



- 14.2 Rated Volume: 23 Liter
- 14.3 Power: 200 Watt
- 14.4 Voltage: 220 Volt
- 14.5 Set temperature: 80 Degree Centigrade (+10)
- 14.6 External dimension: 452 X 310 X 360 mm
- 14.7 Should be useful beauty salon & Spa
- 14.8 Maintains average temperature of 176 Degree Fahrenheit
- 14.9 Place on counter tops, carts, or below treatment tables
- 14.10 Double walled plastic door
- 14.11 Rust proof aluminum interior
- 14.12 Should be useful for Warming Towel

## 15 Infrared Lamp

### 15.1 Basic indicative diagram



- 15.2 Should be provided on a pedestal
- 15.3 Voltage: AC 240V, Frequency: 50 Hz
- 15.4 Power: 200 to 300W
- 15.5 Good quality infrared bulb should be supplied

## 16 Manicure Bowls

### 16.1 Basic indicative diagram



- 16.2 Number of Bowl: 3
- 16.3 Size of bowls: 5, 6.5 and 7.5 inch
- 16.4 Capacity: 400, 1000 and 1500 ml
- 16.5 Material: Glass
- 16.6 Should be useful for manicure, facial & hair color

**17 Manicure Stool**

17.1 Basic indicative diagram



17.2 Should have Soft Cushion Top with back

17.3 Should have Adjustable Height

17.4 Should be useful for Manicure

17.5 Color: Black

## 18 Manicure Table

### 18.1 Basic indicative diagram



### 18.2 Size:

18.2.1 Variation:  $\pm 10\%$

18.2.2 Length: 17 Inch

18.2.3 Width: 12 Inch

18.2.4 Height: 30 Inch

18.3 Should be supplied with two bowls, 3 drawers, middle cushion and lamp

## 19 Manicure Trolley

### 19.1 Basic indicative diagram



### 19.2 Size:

- 19.2.1 Variation:  $\pm 10\%$
- 19.2.2 Length: 17 Inch
- 19.2.3 Width: 12 Inch
- 19.2.4 Height: 30 Inch

### 19.3 Material:

- 19.3.1 Frame: M.S. Tube and Sheet
- 19.3.2 Shelf: Plastic

### 19.4 Shelf: 3 and 1 Tray

### 19.5 Towel stand on one side

### 19.6 Should have 2 bowls of 1500 ml

### 19.7 Bowl size: 8 Inch

### 19.8 Bowl material: Plastics

### 19.9 Should be useful for manicure

### 19.10 Trolley provided with Caster Wheel



## 20 Neck Tray for Perming

### 20.1 Basic indicative diagram



- 20.2 Should be light weight, portable and easy to carry and use
- 20.3 Should be stable and comfortable.
- 20.4 Should be perm proof container.
- 20.5 Should help avoid stains and is easy to place around the neck.
- 20.6 Should be useful for salon hairdressing.
- 20.7 Material: PVC
- 20.8 Color: Black

## 21 Pedi Spa Tub

### 21.1 Basic indicative diagram



- 21.2 Size:
  - 21.2.1 Length: 21 Inch
  - 21.2.2 Width: 21 Inch
  - 21.2.3 Height: 15 Inch
  - 21.2.4 Variation:  $\pm 10\%$
- 21.3 Pedi Tub with Jacuzzi
- 21.4 Should have light arrangement
- 21.5 Should have Hot System

## 22 Pedicure Stool

### 22.1 Basic indicative diagram



- 22.2 Material: Fiber Glass
- 22.3 Should be useful for pedicure Spa
- 22.4 Should be water resistant.
- 22.5 Should be fitted with castor wheels at the bottom for easy

## 23 Shampoo Station with Chair

### 23.1 Basic indicative diagram



23.2 Should have cushioning of soft material.

23.3 Basin: Ceramic

23.4 Size:

23.4.1 Length: 60 Inches

23.4.2 Width: 27 Inches

23.4.3 Height: 36 inches

23.4.4 Variation:  $\pm 10\%$

23.5 Should be useful in hair Wash with attached Hand Shower

## 24 Multipurpose Styling Chair

### 24.1 Basic indicative diagram



### 24.2 Salon Chair

24.3 This Chair Useful in Hair Cutting

24.4 This Chair is Hydraulic & Reclining Chair

24.5 Chair with footrest

24.6 Seat Size

24.6.1 Length: 24 Inch

24.6.2 Width: 25 Inch

24.6.3 Variation:  $\pm 10\%$

24.7 Chair Rotation: 360 Degree

24.8 Hand Rest Material: Cushioning with soft material

24.9 Base Material: Square Stainless Steel base

24.10 Should be fitted with hydraulic pump for easy lifting

24.11 Should be reclining backrest up to 45 Degrees

24.12 Should have removable and detachable headrest

24.13 Should have revolving lock function

24.14 Useful for styling chair for hair

## 25 Thinning Scissors

### 25.1 Basic indicative diagram



- 25.2 Size: 5 inch
- 25.3 Should be double thinning
- 25.4 Should be useful for hair cutting
- 25.5 Should have off set hand holding design
- 25.6 Finish: Mirror finish

## 26 Vapozone

### 26.1 Basic indicative diagram



- 26.2 Frequency: 50 - 60 Hz
- 26.3 Steamer should be useful for Facial
- 26.4 Voltage: 220/ 110V
- 26.5 Material: Plastic
- 26.6 Ozone vaporizer
- 26.7 Color: White
- 26.8 Continuously adjustable steam output
- 26.9 Adjustable height

**27 Wax Heater - Single Pot**

27.1 Basic indicative diagram



- 27.2 Voltage: 220V-240V, 50HZ
- 27.3 Temperature: Up to 150 Degree Centigrade
- 27.4 Single Pot
- 27.5 Should be useful for all Types of Wax



## 28 Wet Sterilizer

### 28.1 Basic indicative diagram



28.2	Rated volume:	46 Liter
28.3	Power:	400 watt
28.4	Voltage:	220 Volt
28.5	Set temperature:	80 Degree Centigrade (+10)
28.6	External dimension:	452 X 310 X 645 mm ( $\pm 10\%$ )

## 29 Yoga Mat

### 29.1 Basic indicative diagram



- 29.2 Size: 6 X 2 feet
- 29.3 Thickness: 6 mm
- 29.4 Material: Thermoplastic elastomers (TPE)
- 29.5 Non Slip, odor less, excellent cushioning with carry bag
- 29.6 Colour: Brown/ Navy Blue